

LEGEND

EXISTING	ITEM DESCRIPTION	PROPOSED
	2" COLD PLANING 2" HMA (TYPE A) OVERLAY	
---	RETAINING WALL	
	CONCRETE FLATWORK	
	PAVEMENT REPAIR	
Ⓢ	SANITARY SEWER (SS)	
ⓐ	CATCH BASIN	
Ⓜ	WATER METER	
BFP	BACKFLOW PREVENTER	
TRMR	ELECTRIC TRANSFORMER	
—SS—	SANITARY SEWER LINE	
—SD—	STORM DRAIN LINE	
⊗	CLEANOUT	
∇	VALVE	
Ⓢ	STEEL BOLLARD	
⊙	EXISTING TREE	
P	SIGN	
	STREET LIGHT	
	IRON FENCE	
—X—	WOOD FENCE	
—OH—	OVERHEAD POWER LINE	

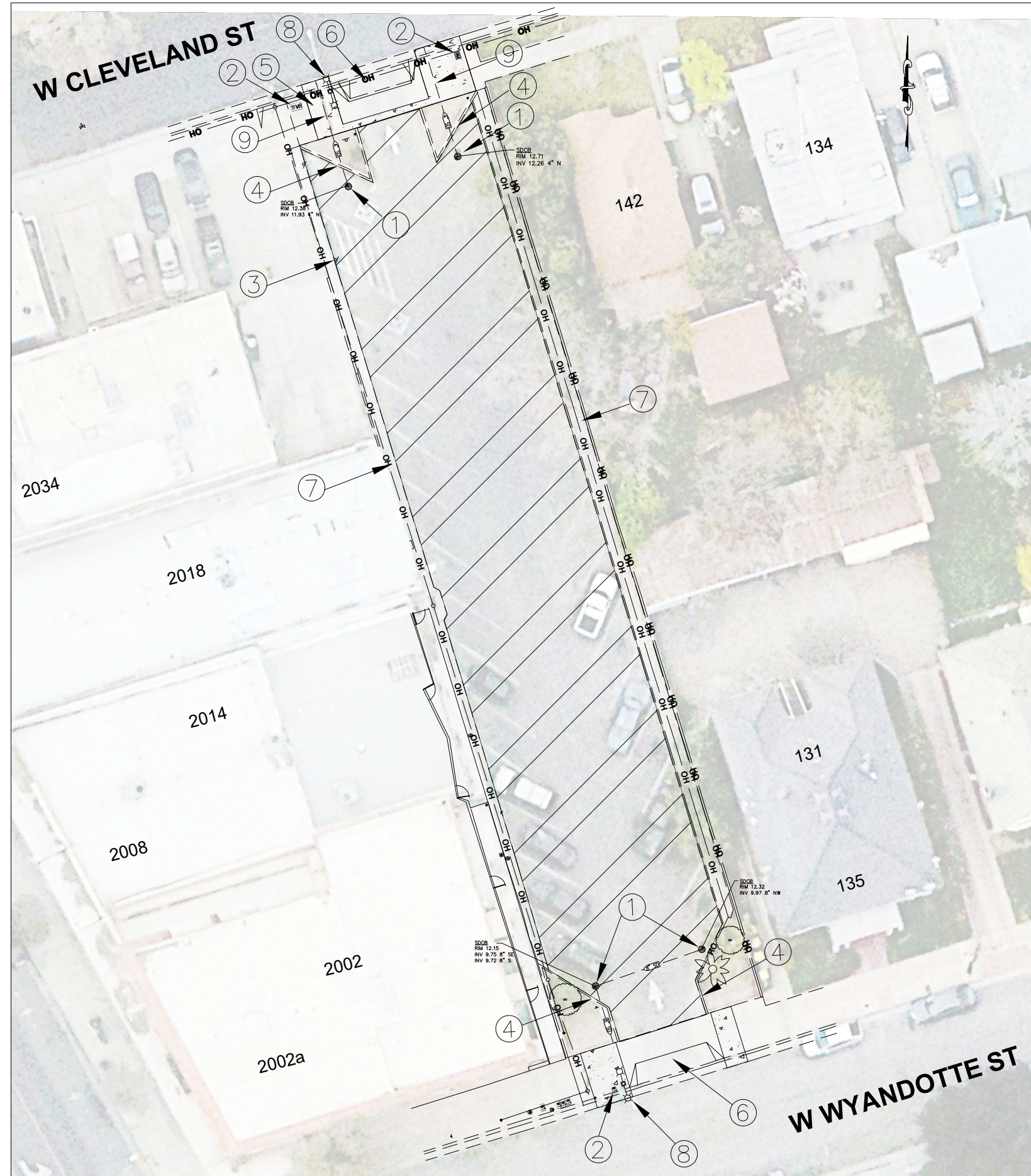
- KEY NOTES**
- ① PROTECT EXISTING STORM DRAIN INLET IN PLACE
 - ② REMOVE STEEL BOLLARD
 - ③ PROTECT EXISTING UTILITY BOX IN PLACE
 - ④ PROTECT EXISTING RETAINING WALL
 - ⑤ REPLACE SIDEWALK, CURB, AND GUTTER PER CITY STD DWG R-52
 - ⑥ REPLACE DRIVEWAY PER CITY STD DWG R-58
 - ⑦ ADD DG AROUND EXISTING TREE WELL
 - ⑧ PROTECT EXISTING CURB AND WALKWAY
 - ⑨ PROTECT EXISTING LIGHT
 - ⑩ REMOVE METAL PLATE, SEE CITY STD DWG D-11 FOR UNDER SIDEWALK DRAIN
 - ⑪ PROTECT EXISTING SEWER MAINTENANCE HOLE IN PLACE
 - ⑫ REMOVE EXISTING AND INSTALL NEW ACCESSIBLE PARKING SIGN

ADDITIONAL NOTES:

1. CONTRACTOR SHALL MAINTAIN EXISTING GRADES UNLESS OTHERWISE SHOWN.
2. CONTRACTOR IS RESPONSIBLE FOR REMOVING AND PROPERLY DISPOSING OF ALL MATERIALS DEMOLISHED FROM THE SITE INCLUDING: PAVEMENT, CONCRETE, STORM DRAINAGE MATERIALS AND ELECTRICAL MATERIALS.
3. ANYTHING NOT CALLED OUT TO BE REMOVED SHALL BE PROTECTED IN PLACE, AND IF DAMAGED, SHALL BE REPLACED/REPAIRED BY THE CONTRACTOR.
4. ALL EXISTING UTILITIES WERE PLOTTED FROM RECORD INFORMATION AND FIELD TOPOGRAPHY. ACTUAL LOCATIONS MAY VARY AND ADDITIONAL CROSSINGS MAY EXIST IN THE FIELD. IT IS IMPERATIVE THAT U.S.A LOCATING SERVICES LOCATE AND MARK EXISTING UTILITIES PRIOR TO THE START OF EXCAVATION.

MIRACLE MILE PARKING LOT RESURFACING
CITY PROJECT NO. WC21021

LAYOUT - PARKING LOT A



LEGEND

EXISTING	ITEM DESCRIPTION	PROPOSED
— — —	2" COLD PLANING 2" HMA (TYPE A) OVERLAY	
— — —	RETAINING WALL	
	CONCRETE FLATWORK	
	PAVEMENT REPAIR	
⊙	SANITARY SEWER (SS)	
⊕	CATCH BASIN	
⊞	WATER METER	
⊞	BACKFLOW PREVENTER	
⊞	ELECTRIC TRANSFORMER	
— ⊞ —	SANITARY SEWER LINE	
— ⊞ —	STORM DRAIN LINE	
⊕	CLEANOUT	
⊞	VALVE	
⊞	STEEL BOLLARD	
⊞	EXISTING TREE	
⊞	SIGN	
⊞	STREET LIGHT	
— ⊞ —	IRON FENCE	
— x —	WOOD FENCE	
— OH —	OVERHEAD POWER LINE	

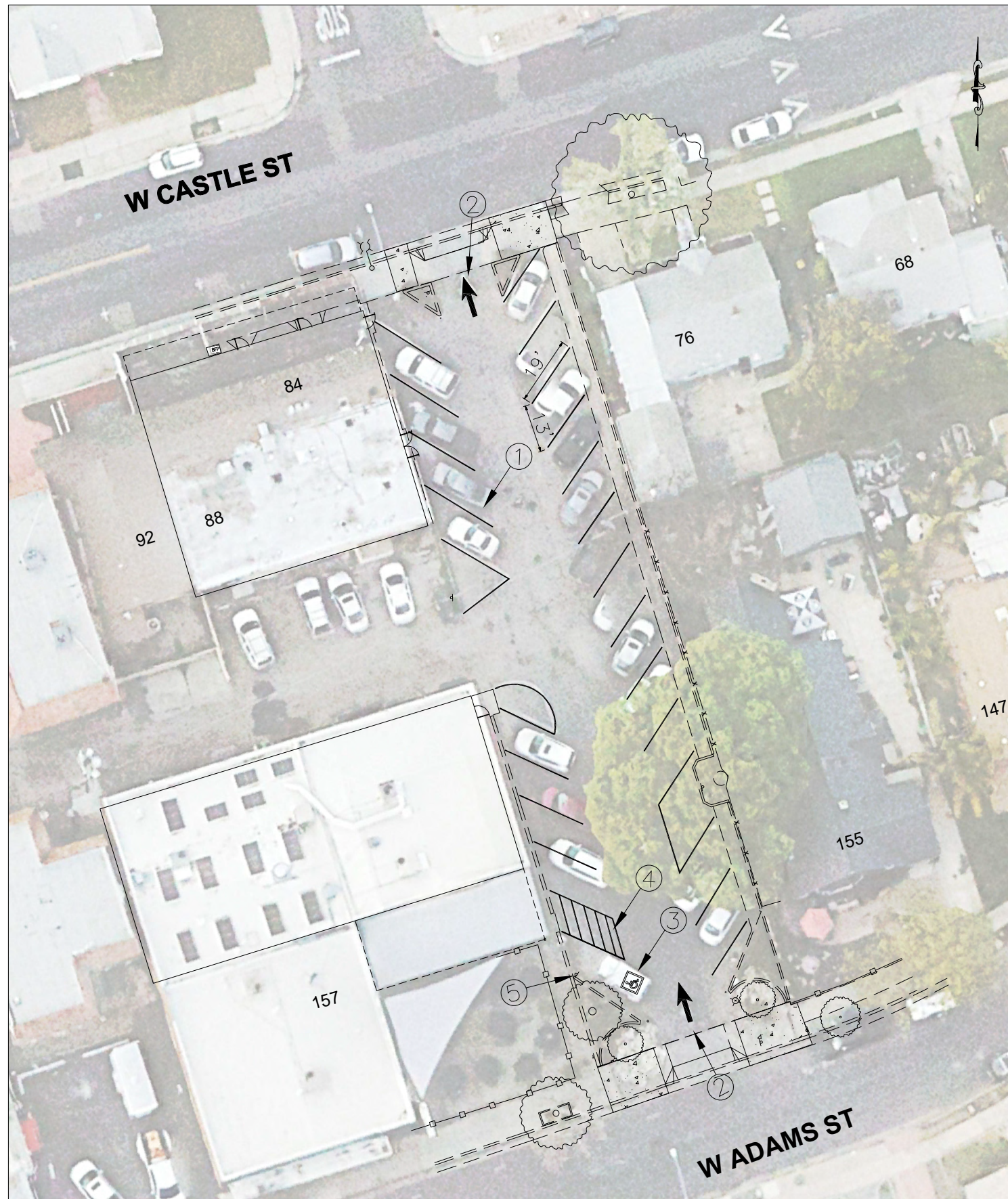
- KEY NOTES**
- ① PROTECT EXISTING STORM DRAIN INLET IN PLACE
 - ② PROTECT EXISTING UTILITY BOX IN PLACE
 - ③ REMOVE EXISTING AND INSTALL NEW ACCESSIBLE PARKING SIGN
 - ④ PROTECT EXISTING CURB
 - ⑤ REPLACE SIDEWALK, CURB, AND GUTTER PER CITY STD DWG R-52
 - ⑥ REPLACE DRIVEWAY PER CITY STD DWG R-58
 - ⑦ PROTECT EXISTING CURB AND WALKWAY
 - ⑧ PROTECT EXISTING LIGHT
 - ⑨ REMOVE METAL PLATE. SEE CITY STD DWG D-11 FOR UNDER SIDEWALK DRAIN

ADDITIONAL NOTES:

1. CONTRACTOR SHALL MAINTAIN EXISTING GRADES UNLESS OTHERWISE SHOWN.
2. CONTRACTOR IS RESPONSIBLE FOR REMOVING AND PROPERLY DISPOSING OF ALL MATERIALS DEMOLISHED FROM THE SITE INCLUDING: PAVEMENT, CONCRETE, STORM DRAINAGE MATERIALS AND ELECTRICAL MATERIALS.
3. ANYTHING NOT CALLED OUT TO BE REMOVED SHALL BE PROTECTED IN PLACE, AND IF DAMAGED, SHALL BE REPLACED/REPAIRED BY THE CONTRACTOR.
4. ALL EXISTING UTILITIES WERE PLOTTED FROM RECORD INFORMATION AND FIELD TOPOGRAPHY. ACTUAL LOCATIONS MAY VARY AND ADDITIONAL CROSSINGS MAY EXIST IN THE FIELD. IT IS IMPERATIVE THAT U.S.A LOCATING SERVICES LOCATE AND MARK EXISTING UTILITIES PRIOR TO THE START OF EXCAVATION.

MIRACLE MILE PARKING LOT RESURFACING
CITY PROJECT NO. WC21021

LAYOUT - PARKING LOT C



LEGEND

SIGNING AND STRIPING LEGEND

- ① PARKING SPACES SHALL BE CLEARLY OUTLINED WITH 4" WHITE WIDE LINES PAINTED ON THE SURFACE
- ② INSTALL TYPE I ARROW PER CA MUTCD FIGURE 3B-24(CA)
- ③ INSTALL ADA COMPLIANCE LEGEND PER CA MUTCD FIGURE 3B-22(CA).
- ④ INSTALL ACCESSIBLE PARKING PER CALTRANS STD PLANS A90A.
- ⑤ INSTALL R99C (CA) ACCESSIBLE PARKING SIGN



LEGEND

SIGNING AND STRIPING LEGEND

- ① PARKING SPACES SHALL BE CLEARLY OUTLINED WITH 4" WHITE WIDE LINES PAINTED ON THE SURFACE
- ② INSTALL TYPE I ARROW PER CA MUTCD FIGURE 3B-24(CA)
- ③ INSTALL ADA COMPLIANCE LEGEND PER CA MUTCD FIGURE 3B-22(CA).
- ④ INSTALL ACCESSIBLE PARKING PER CALTRANS STD PLANS A90A.
- ⑤ INSTALL R99C (CA) ACCESSIBLE PARKING SIGN
- ⑥ PAINT CURB WITH BLUE PAINT